

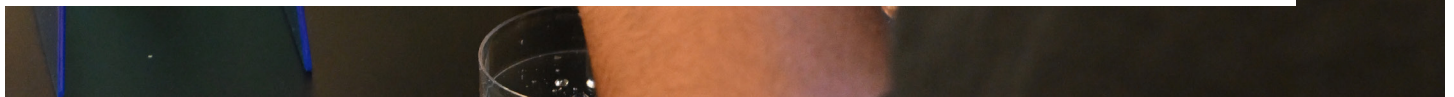
# WOFFORD COLLEGE



**TERRIER**

**EXPO**

WOFFORD  
COLLEGE



# TABLE OF CONTENTS

---

## **01 SCHEDULE OF EVENTS**

## **02-03 ART, CREATIVE WORKS AND POSTER SESSIONS SCHEDULE**

## **04-05 ORAL PRESENTATIONS SCHEDULE**

## **06-15 TERRIER EXPO PROJECT DESCRIPTIONS AND MENTORS**

- 06 “More Than Teaching: The Role of Relational Pedagogy in Engagement, Motivation, and Confidence in Higher Education”
- 06 “Social Support, Attachment Styles, and Coping Strategies as Predictors of Depression”
- 06 “Symbiont density impacts bleaching susceptibility in the model anemone *Exaiptasia diaphana*”
- 06 “Baba Yaga”
- 06 “Marines in Vladivostock: America’s Forgotten War in Russia”
- 06 “Women, ESG, and the Firm”
- 07 “The Forgotten Hero: Greece during World War II”
- 07 “Development of an Embryonic Zebrafish Model for Doxorubicin-Induced Cardiomyopathy”
- 07 “Frames of Impact: Engaging Students with Photovoice in the Social Sciences”
- 07 “Scriptural Hermeneutics in Contemporary Islamic and Christian Theology”
- 07 “Paced Breathing’s Ability to Impact the Emotional Carry-Over Effect, Physiological Responses, and Long-Term Memory”
- 07 “Effects of Point Mutations on Protein Stability in Heat-Resistant Algae”
- 07 “The Function of Folate Binding Proteins in Cancer Development and Chemotherapeutics”
- 08 “Contrasting Development Models: Unintended Consequences of Chinese and U.S. Development Financing”
- 08 “The Anemone *Exaiptasia Diaphana* Actively Limits Phosphate Sharing with its Symbionts”
- 08 “How Length and Genotype Influence Benthic Settlement of Icelandic Atlantic Cod”
- 08 “The Role of Sustainable Food Packaging in Enhancing Food Safety and Global Trade”
- 08 “Compassionate Endings: Navigating Death in a Multifaith Healthcare Landscape”
- 08 “Constructing the Constitution: Presidential Entrepreneurship and the Expansion of Authority”
- 08 “Mathematical Models of the 2025 Texas Measles Outbreak”
- 08 “Detrended Fluctuation Analysis (DFA) as a Measurement of Heart Rate Variability (HRV)”
- 09 “Green sea turtle (*Chelonia mydas*) leukocyte and erythrocyte toxicity: an analysis of cellular morphology in polluted coastal habitats”
- 09 “Constructing the Constitution: Presidential Entrepreneurship and the Expansion of Authority”
- 09 “The Pro Tanto Wrong of Disability Selective Abortion”
- 09 “Embedded Prototyping: SmartKoozie”
- 09 “The Ghosts of The Spanish Civil War: Amplifying Unheard Voices from 1936 and Beyond”
- 09 “La Mujer Embarazada y el Destino de sus Hijos Durante la Guerra Civil Española (“Pregnant women and the fate of their children during the Spanish Civil War”)

- 09 "The Basque Country: A Fight for Sovereignty"
- 09 "Ay, Carolina: South Carolinian Volunteers in the Spanish Civil War"
- 10 "Influential Women of the Spanish Civil War"
- 10 "Building Critical Thinkers: Philosophy for Children in Developmentally Appropriate Practices"
- 10 "The History of Hip Hop: How Rap Music Has Been Used as a Tool for Liberation"
- 10 "Fluoro-olefin and PEG-vinyl Ether Copolymerization for Polymer Blend Electrolytes"
- 10 "Women in Politics in South Carolina"
- 10 "Large Mammal Herbivores as the Gardeners of Tropical Forests"
- 10 "Heat Evolution of the Bacterial Microbiome Found in Heat-Evolved Cladocodium Clacro"
- 11 "The Business of War: The Resurgence of Mercenaries and the Shaping of Modern African States"
- 11 "To Coup or Not to Coup: West Africa"
- 11 "Beyond Classical Deterrence: Rethinking Israel-Iran Relations Through Modern Deterrence Theories"
- 11 "Movement or Cult?: How Religious Movements Affect Identity and Well-Being"
- 11 "The Age of Adam: A Metaphysical Framework for Reconciling Biblical Literalism with Modern Climatology"
- 11 "Embedded Prototyping: BeatTooth"
- 11 "Spectral Line Classification"
- 12 "FlatSat"
- 12 "Embedded Prototyping: Sharingan"
- 12 "Regional Analysis of Medical Apartheids in Spartanburg County"
- 12 "Debating the Dismantling of Diversity, Equity, and Inclusion Initiatives in Higher Education"
- 12 "Seasonal Variation in Reproductive Output of Eastern Bluebirds"
- 12 "Enhancing Quantum Dot Fluorescence in Lung Cancer Cells: The Role of DMSO"
- 12 "Tropical Cyclone Intensity and Frequency Since 1960 on a Global Scale: A Statistical Analysis of the NOAA IBTrACS Dataset"
- 12 "Beyond Aesthetics: Exploring Fashion as Identity"
- 13 "Germany and Poland: Diverging NATO Member States"
- 13 "Strategic Spartanburg Summer of Service"
- 13 "A Fed Gator is a Dead Gator"
- 13 "Blaq Belt Theory"
- 13 "Effects of Urbanization on Abundance, Condition, and Habitat Preferences of Two Crayfishes"
- 13 "Rastafarian Women: Shadow or Sunlight"
- 13 "Why Malls Are Dying"
- 14 "PRIMETIME PREJUDICE: The Misrepresentation of Marginalized Communities in Law and Order: Special Victims Unit"
- 14 "Civil Rights & Spirituality Through the Lens of Malcolm X"
- 14 "Subsets of Myeloid Progenitors Limit Age-Associated Cortical Bone Loss"
- 14 "Aroma Profile of Wine Throughout Fermentation"
- 14 "The Impact of the Disaffiliation Within the United Methodist Church in North & South Carolina"
- 14 "Faith-Based Rehab in Prison"
- 14 "Voces de Liderazgo"
- 15 "Family Connection to the Underground Railroad"
- 15 "Water Quality in Spartanburg Creeks"
- 15 "Bridging the Gap Between Religion and Atheism"

# SCHEDULE OF EVENTS

## (at glance)

---

Friday, April 25, 2025

Location: Rosalind Sallenger Richardson Center for the Arts and Chandler Center for Environmental Studies (CCES), Wofford College

<b>12:30-1:30 p.m.</b>	<b>Check-in and registration in front of RSRCA</b>
<b>1 p.m.</b>	<b>Brief welcome remarks</b>
<b>1-1:45 p.m.</b>	<b>Poster/Art/Creative Works Session I (front hallway, RSRCA)</b>
<b>1:45-2:30 p.m.</b>	<b>Oral Presentations Session I (RSRCA 112 and CCES)</b>
<b>2:30-3:30 p.m.</b>	<b>Oral Presentations Session II (RSRCA 112 and CCES)</b>
<b>3:30-4:15 p.m.</b>	<b>Oral Presentations Session III (RSRCA 112 and CCES)</b>
<b>4-4:45 p.m.</b>	<b>Poster/Art/Creative Works Session II (front hallway, RSRCA)</b>
<b>4:45-5:30 p.m.</b>	<b>Reception and celebration on the front lawn of Main Building</b>

---

# ART, CREATIVE WORKS AND POSTER SESSIONS SCHEDULE

Location: Rosalind Sallenger Richardson Center for the Arts

## SESSION I 1-1:45 P.M.

Space #	Student Name	Project Title
1	Yohan Ksor, Robert McKay and Juan Salas	"Embedded Prototyping: SmartKoozie"
2	Moses Briggs and Emilio Rochow	"Embedded Prototyping: BeatTooth"
3	Cole Anderson and John Wetmore	"Embedded Prototyping: Sharingan"
4	Lilia Reihls and Izzy Duggle	"Paced Breathing's Ability to Impact The Emotional Carry-Over Effect, Physiological Responses, and Long-Term Memory"
5	Emma Williams and Mills Ham	"The Function of Folate Binding Proteins in Cancer Development and Chemotherapeutics"
6	Lillian Smith	"Contrasting Development Models: Unintended Consequences of Chinese and U.S. Development Financing"
7	Addison Brandon and Arika Felices	"Social Support, Attachment Styles, and Coping Strategies as Predictors of Depression"
8	Sam Stuckey, Brian Iavelle, Niko Canoutas and Mal Ancrum	"The Basque Country: A Fight for Sovereignty"
9	Amelia McCurley, Katie Lammers and Camille Terracina	"Influential Women of the Spanish Civil War"
10	Nathan Krueger	"Heat Evolution of the Bacterial Microbiome Found in Heat-Evolved Cladocodium Clacro"
11	Emily Schwendemann	"Spectral Line Classification"
12	Alexandra Johnson	"Germany and Poland: Diverging NATO Member States"
13	Harlan Glenn	"Effects of Urbanization on Abundance, Condition, and Habitat Preferences of Two Crayfishes"
14	Paulina Veremchuk	"Why Malls Are Dying"
15	Jordyn Arionna Ford	"PRIMETIME PREJUDICE The Misrepresentation of Marginalized Communities in Law and Order: Special Victims Unit"
16	Grayson Xavier Gregg	"Development of an Embryonic Zebrafish Model for Doxorubicin-induced Cardiomyopathy"
17	Christopher Gunsalus	"Family connection to the Underground Railroad"
18	Joseph Navarro	"The Impact of the Disaffiliation within the United Methodist Church in North & South Carolina"
19	Chandler Doody	"Bridging the Gap Between Religion and Atheism"

**SESSION II**  
**4-4:45 P.M.**

<b>Student Name</b>	<b>Project Title</b>
Katie Watson	"Symbiont density impacts bleaching susceptibility in the model anemone Exaiptasia Diaphana"
Sterling Embury	"The Anemone Exaiptasia Diaphana Actively Limits Phosphate Sharing with its Symbionts"
Grace deMaine	"Compassionate Endings: Navigating Death in a Multifaith Healthcare Landscape"
Promise Henry	"Women, ESG, and the Firm"
Millie Rice	"Constructing the Constitution: Presidential Entrepreneurship and the Expansion of Authority"
Gannon Shepard	"Market Research & Strategy Report for a Startup"
Cassie Drew	"The Pro Tanto Wrong of Disability Selective Abortion"
Kaitlyn (Katie) Miller	"Building Critical Thinkers: Philosophy for Children in Developmentally Appropriate Practices"
Blythe Edwards	"Women in Politics in South Carolina"
Joseph Kimberling	"The Business of War: The Resurgence of Mercenaries and the Shaping of Modern African States"
Joseph Kimberling	"To Coup or Not to Coup: West Africa"
Lundyn Ladner	"Beyond Classical Deterrence: Rethinking Israel-Iran Relations Through Modern Deterrence Theories"
Kai Beckett	"Debating the Dismantling of Diversity, Equity, and Inclusion Initiatives in Higher Education"
Millie Hatchette	"Seasonal Variation in Reproductive Output of Eastern Bluebirds"
Kathryn Garner	"Large Mammal Herbivores as the Gardners of Tropical Forests"
Ramie Thompson	"Tropical Cyclone Intensity and Frequency Since 1960 on a Global Scale: A Statistical Analysis of the NOAA IBTrACS Dataset"
Campbell Cawthon	"Water Quality in Spartanburg Creeks"
Quincy Hughes	"Faith-Based Rehab in Prison"
Zion Sampson	"Subsets of Myeloid Progenitors Limit Age-Associated Cortical Bone Loss"

# ORAL PRESENTATIONS SCHEDULE

Locations: Chandler Center for Environmental Studies and Rosalind Sallenger Richardson Center for the Arts (Room 112)

Please refer to the full program for map and more information.

	Location: CCES 109	Location: CCES 110	Location: CCES 212	Location: RSRCA 112
Time	Community Health and Pedagogy	Art and Identity	Spanish Civil War in Literature and Pop Culture	Research to Careers Roundtable Session
1:45-2 p.m.	"More Than Teaching" by Grace Harrison, Katie Miller, Sophie Peek, Ethan Hearn and Makayla Spencer	"Beyond Aesthetics: Exploring Fashion as Identity" by Tianna Kidd	"The Ghosts of The Spanish Civil War" by Lilia Reihis	A roundtable discussion on the topic of student research to careers, led by members of the Career Center.
2-2:15 p.m.	"Frames of Impact" by Evie Whitesell	"A Fed Gator is a Dead Gator" by Kimber Keene	"La Mujer Embarazada y el Destino de sus Hijos Durante la Guerra Civil Española" by Darien Pisacano, Bailey Herron and Kaylin Bell	
2:15-2:30 p.m.	"Regional Analysis of Medical Apartheids in Spartanburg County" by Anthony Tarulli	"Blaq Belt Theory" by Eric Harris	"Ay, Carolina: South Carolinian Volunteers in the Spanish Civil War" by Jackson T. Forrest, Ethan Montes and Jose Ruiz Torres	

	Location: CCES 109	Location: CCES 110	Location: CCES 212	Location: RSRCA 112
Time	Religion and Spirituality	The Humanities and Community Change	Chemistry and Physics	Washington Fellows Roundtable Session
2:30-2:45 p.m.	"Scriptural Hermeneutics in Contemporary Islamic and Christian Theology" by Carolina Woody	"Baba Yaga" by Nadia Drahun	"Effects of Point Mutations on Protein Stability in Heat-Resistant Algae" by Devin Ruppe	A roundtable discussion led by Dr. David Alvis, professor of government and chair of the Department of Government and International Affairs
2:45-3 p.m.	"Movement or Cult?: How Religious Movements Affect Identity and Well-Being" by Becca Hinds	"The History of Hip Hop: How Rap Music Has Been Used as a Tool for Liberation," by Tae'Von Gibbs	"Fluoro-olefin and PEG-vinyl Ether Copolymerization for Polymer Blend Electrolytes" by Kleo Young	
3-3:15 p.m.	"The Age of Adam: A Metaphysical Framework for Reconciling Biblical Literalism with Modern Climatology" by Gabriella DiPrima	"Strategic Spartanburg Summer of Service" by Joshua Todd	"FlatSat" by Emily Schwendemann and Bryce Tomlins	
3:15-3:30 p.m.	"Civil Rights & Spirituality Through the Lens of Malcolm X" by Enock Maganda	"Voces de Liderazgo" by Kayla Southwood	"Aroma Profile of Wine Throughout Fermentation" by Ellie Shealy	

	<b>Location: CCES 109</b>	<b>Location: CCES 110</b>	<b>Location: CCES 212</b>	<b>Location: RSRCA 112</b>
<b>Time</b>	<b>Health and STEM</b>	<b>The Environment and Sustainability</b>	<b>History: Culture, Memoir, and War</b>	<b>Community-Based Learning and Civic Engagement Roundtable Session</b>
<b>3:30-3:45 p.m.</b>	"Mathematical Models of the 2025 Texas Measles Outbreak" by Caroline Kirk	"How Length and Genotype Influence Benthic Settlement of Icelandic Atlantic Cod" by Wilton Grice	"Rastafarian Women: Shadow or Sunlight" by MauriAnna Richardson	The director of Wofford's Center for Community-Based Learning will lead a roundtable discussion of students who've engaged deeply in curricular and co-curricular community-based learning, as they trace their development along the CCBL's student developmental framework and offer input for shaping Wofford's future community-based learning endeavors.
<b>3:45-4 p.m.</b>	"Detrended Fluctuation Analysis (DFA) as a Measurement of Heart Rate Variability (HRV)" by Devin Ruppe	"The Role of Sustainable Food Packaging in Enhancing Food Safety and Global Trade" by Joe Cahill	"Marines in Vladivostock" by Max Markwald	
<b>4-4:15 p.m.</b>	"Enhancing Quantum Dot Fluorescence in Lung Cancer Cells: The Role of DMSO" by Emily Schwendemann, Harper Morgan, Bryce Tomlins and John Henry Tennant	"Green sea turtle (Chelonia mydas) leukocyte and erythrocyte toxicity: an analysis of cellular morphology in polluted coastal habitats" by Strom Thurmond and Archer Meares	"The Forgotten Hero: Greece during World War II" by Liana Giannopoulos	

# TERRIER EXPO PROJECT DESCRIPTIONS AND MENTORS

**STUDENTS:** Grace Harrison, Katie Miller, Sophie Peek, Ethan Hearn and Makayla Spencer

**PROJECT MENTOR:** Dr. Kristy Hammett

## **More Than Teaching: The Role of Relational Pedagogy in Engagement, Motivation, and Confidence in Higher Education**

This presentation explores the transformative role of relational pedagogy in fostering motivation, engagement and academic success within the liberal arts context. Drawing on research from Wofford College, it emphasizes the importance of trust, emotional safety and care in teacher-student relationships. Key findings reveal how relational practices empower students to thrive both academically and emotionally, creating meaningful connections that enhance confidence and engagement. By embracing “heart work,” educators can cultivate classrooms where relationships are central to learning. This study highlights relational pedagogy as a cornerstone of effective teaching and holistic student development in the liberal arts tradition.

**STUDENTS:** Addison Brandon and Arika Felices

**PROJECT MENTOR:** Dr. Cecile Nowatka

## **Social Support, Attachment Styles, and Coping Strategies as Predictors of Depression**

Rates of depression are rapidly increasing, causing an increase in research into predictors, protective factors and risk factors in hopes of prevention. The aim of this study was to examine sex, attachment style, perceived social support and coping mechanisms as possible predictors of depression. An online survey was used to investigate these relationships. Results supported six of nine of the hypotheses. These findings could have implications for prevention of depression in at-risk populations.

**STUDENT:** Katie Watson

**PROJECT MENTOR:** Dr. Geoffrey Mitchell

## **Symbiont density impacts bleaching susceptibility in the model anemone *Exaiptasia diaphana***

Corals are threatened by rising sea temperatures, which cause them to expel their algal symbionts (bleach).

Without these symbionts, corals cannot harvest energy from sunlight and struggle to survive. To evaluate the link between heat stress and symbiont proliferation in a model anemone, we assessed whether anemones that have been freshly inoculated with symbionts are more susceptible to bleaching than anemones that have well-established symbionts. Because symbiont proliferation is higher in freshly inoculated anemones, we expected those anemones to be most susceptible to heat stress. Instead, results indicate that anemones with established symbionts are more susceptible to heat-induced bleaching.

**STUDENT:** Nadia Drahun

**PROJECT MENTOR:** Dr. Anne Rodrick

## **Baba Yaga**

How do Baba Yaga’s interpretations or symbolism change throughout time? This is my main research question for my humanities capstone. In addition to the research, I will also be doing a creative photography project with 5-10 images based on my interpretations of Baba Yaga. I am also doing a film capstone this semester and will be making a short film with Baba Yaga as a side character. Therefore, I would like to show the trailer for the short film.

**STUDENT:** Max Markwald

**PROJECT MENTOR:** Dr. Clayton Whisnant

## **Marines in Vladivostock: America’s Forgotten War in Russia**

This presentation is based on my honors thesis for the history department on the foreign interventions in the Russian Civil War between 1918 and 1922.

**STUDENT:** Promise Henry

**PROJECT MENTOR:** Dr. Amanda Olsen

## **Women, ESG, and the Firm**

We aim to contribute to the finance literature by studying the influence of women on boards of firms with a strong ESG focus on the firm. We will exploit the announcement and implementation of the new CSRD (Corporate Sustainability Reporting Directive) in the European Union to study whether firms in the U.S. that have a relationship with an impacted EU firm change in the post periods. We will examine (1) key firm fundamentals, such as return on assets (ROA) and firm value, (2) responses to shareholder proposals (recommendations or requirements

from shareholders that the firm's management and/or board of directors take action) on governance and social responsibility and (3) transparency in ESG disclosure. This research aims to shed light on how the interaction between women and ESG awareness contributes to firm outcomes.

**STUDENT:** Liana Giannopoulos

**PROJECT MENTOR:** Dr. Clayton Whisnant

### **The Forgotten Hero: Greece during World War II**

This is my history honors thesis in short presentation format. The thesis itself will be a 50- to 55-page paper. The thesis has two parts. First, I will examine how historical literature (such as books and articles written by historians and non-historians) has depicted Greece's involvement in World War II. Second, I will talk through Greece's involvement in World War II based on my own readings or primary and secondary sources. The goal of the project is to first prove that Greece played an important part in WWII, and second, to argue that by leaving Greece (and other "minor powers") out of our studies of World War II, we are losing an important piece of its history.

**STUDENT:** Grayson Xavier Gregg

**PROJECT MENTOR:** Dr. Kelli Carroll

### **Development of an Embryonic Zebrafish Model for Doxorubicin-Induced Cardiomyopathy**

Doxorubicin-induced cardiomyopathy (DIC) is a phenomenon in which doxorubicin hydrochloride, a commonly used cancer drug, causes damage that negatively impact the heart, resulting in a vast array of health complications, and in some cases, heart failure. To understand DOX's impacts on developing zebrafish embryos, we studied the effects of DOX exposure at multiple concentrations and points during development. Furthermore, we tested over both short and prolonged periods to assess whether extended drug administration exacerbates the severity or frequency of side effects.

**STUDENT:** Evie Whitesell

**PROJECT MENTOR:** Dr. Lyla Byers

### **Frames of Impact: Engaging Students with Photovoice in the Social Sciences**

My presentation involves a workshop that outlines the completion of a photovoice project from a student's perspective. The photovoice project combines photography, personal narrative and academic research to help students learn to apply the sociological mindset to everyday situations.

**STUDENT:** Carolina Woody

**PROJECT MENTORS:** Drs. Trina Jones,  
Phillip Dorroll and Ingrid Lilly

### **Scriptural Hermeneutics in Contemporary Islamic and Christian Theology**

This research project analyzes how the subjective interpretation of scripture affects political landscapes and societal standards.

**STUDENTS:** Lilia Reihns and Izzy Duggle

**PROJECT MENTOR:** Dr. Katherine Steinmetz

### **Paced Breathing's Ability to Impact the Emotional Carry-Over Effect, Physiological Responses, and Long-Term Memory**

Increased arousal is consistently found to be associated with increased memory, but it is unclear whether relaxation techniques alter memory through decreased arousal or through divided attention. This study used paced breathing to manipulate arousal and compare the attention and arousal hypotheses of memory modulation. The results support the attention hypothesis of memory modulation, suggesting that despite evoking changes in arousal, the change in breathing pace during encoding divided attention and subsequently impaired memory.

**STUDENT:** Devin Ruppe

**PROJECT MENTOR:** Dr. Michael Cato

### **Effects of Point Mutations on Protein Stability in Heat-Resistant Algae**

Coral bleaching is a rapidly developing environmental crisis that is taking the oceans by storm. As we report, 90% of the world's coral bleached, and as we enter the fifth mass bleaching event, scientists are rushing to find a solution. Here, we present a scan of molecular proteins whose function could be vital for the rescue of corals that still remain under threat of bleaching and eventual death, intending our findings to catalyze an eventual elucidation of the molecular mechanisms underlying coral bleaching.

**STUDENTS:** Emma Williams and Mills Ham

**PROJECT MENTOR:** Dr. Ramin Radfar

### **The Function of Folate Binding Proteins in Cancer Development and Chemotherapeutics**

In our research, we have closely studied the enzymes formyltetrahydrofolate synthetase (FTHFS) and dihydrofolate reductase (DHFR). Both enzymes bind folate and folate derivatives and are members of the folate mediated one-carbon metabolism. They are responsible for synthesis of DNA/RNA building blocks. Cancer cells divide and multiply quickly and use nucleotides fast. Inhibition of folate pool enzymes may slow down the rate of cancer cell

growth. To better understand the mechanism of action, factors that affect substrate binding and conversion to product, and to study inhibition of the two folate binding enzymes, we have purified and analyzed FTHFS and DHFR. The goal of this project was to use analytical methods to separate, verify and crystallize the folate-binding proteins from chicken liver and recombinant cells.

**STUDENT:** Lillian Smith

**PROJECT MENTOR:** Dr. Nayef Samhat

### **Contrasting Development Models: Unintended Consequences of Chinese and U.S. Development Financing**

This study examines the differing development financing models of Chinese and U.S. development entities. The Chinese model focuses on state-led infrastructure investment through concessional loans and resource-backed financing. In contrast, the U.S. approach emphasizes private-sector growth with a focus on transparency and sustainability. Both models have produced unintended consequences. By comparing these two approaches through case studies in Equatorial Guinea and Mozambique, the research highlights how different structural priorities influence outcomes tied to environmental degradation and identifies opportunities for improvement. This analysis emphasizes the need for a balanced approach to development finance to achieve sustainable global development.

**STUDENT:** Sterling Embury

**PROJECT MENTOR:** Dr. Geoffrey Mitchell

### **The Anemone *Exaiptasia Diaphana* Actively Limits Phosphate Sharing with its Symbionts**

Corals depend on symbiosis with photosynthetic algae that reside within their cells. This relationship, however, is delicate, as rising sea temperatures are causing corals to bleach, expelling their symbionts. We investigated whether anemone hosts actively limit sharing of phosphate with their symbionts. We found that while anemone tissue had higher phosphate levels at exposure, symbiont phosphate remained constant, suggesting that the host is actively limiting how much phosphate is shared with the symbionts.

**STUDENT:** Wilton Grice

**PROJECT MENTOR:** Dr. Jennifer Bradham

### **How Length and Genotype Influence Benthic Settlement of Icelandic Atlantic Cod**

This research was conducted while studying abroad in Iceland. It investigates how the length and genotype of juvenile Atlantic cod influence benthic settlement in the Westfjords of Iceland, using stomach content as a proxy for pelagic and benthic foraging. The research was completed alongside Guðbjörg Ásta Ólafsdóttir of the University of Iceland Research Centre in the Westfjords region.

**STUDENT:** Joe Cahill

**PROJECT MENTOR:** Dr. Robin Lewis

### **The Role of Sustainable Food Packaging in Enhancing Food Safety and Global Trade**

This is an oral presentation on the history of sustainable food packaging. The main focus will be modern developments and implications on global trade and food safety.

**STUDENT:** Grace deMaine

**PROJECT MENTOR:** Dr. Trina Jones

### **Compassionate Endings: Navigating Death in a Multifaith Healthcare Landscape**

Our project focused on compiling resources for healthcare workers and caregivers navigating the end of life for either their patients or loved ones. We looked at the multifaith landscape of our healthcare system as well as the difficulties regarding making medical decisions with a faith-focused mindset.

**STUDENT:** Millie Rice

**PROJECT MENTOR:** Dr. Sam Fontaine

### **Constructing the Constitution: Presidential Entrepreneurship and the Expansion of Authority**

This project is centered around the development of the president's authority to restore domestic order during times of insurrection, rebellion and lawlessness. Focusing on the Gilded Age, it explores specifically presidents Grover Cleveland and Benjamin Harrison's uses of federal military intervention to quell domestic disturbances. The research includes reviewing biographies, archival research in Washington, D.C., and coding documents.

**STUDENT:** Caroline Kirk

**PROJECT MENTOR:** Dr. Rachel Buchanan

### **Mathematical Models of the 2025 Texas Measles Outbreak**

This project focuses on the development of mathematical models representing the current measles outbreak while examining vaccination rates and developing an age stratified model. We compare the results of our model to real data.

**STUDENT:** Devin Ruppe

**PROJECT MENTOR:** Dr. Carolyn Martsberger

### **Detrended Fluctuation Analysis (DFA) as a Measurement of Heart Rate Variability (HRV)**

Measurement of heart rate variability (HRV) has many clinical applications, allowing physicians to make analytical determinations of heart health. There are many methods

of measuring HRV using EKG data; detrended fluctuation analysis (DFA) is a popular method to determine HRV. However, there are many parameters that are seemingly arbitrarily chosen from study to study. We propose optimal parameters for DFA based off of calculations from 24-hour Wofford student data.

**STUDENTS:** Strom Thurmond and Archer Meares

**PROJECT MENTOR:** Dr. Boyce M. Lawton III

### **Green sea turtle (*Chelonia mydas*) leukocyte and erythrocyte toxicity: an analysis of cellular morphology in polluted coastal habitats**

Sea turtle blood was analyzed for toxins while studying abroad in Australia.

**STUDENT:** Gannon Shepard

**PROJECT MENTOR:** Dr. Ezgi Ferrand

### **Constructing the Constitution: Presidential Entrepreneurship and the Expansion of Authority**

This presentation expresses the journey of gathering and analyzing information to develop a plan towards going to market with a startup company. This specific company we were involved with created an innovative medical device.

**STUDENT:** Cassie Drew

**PROJECT MENTOR:** Dr. Karl Adam

### **The Pro Tanto Wrong of Disability Selective Abortion**

This philosophical research addresses the different perspectives on the debate surrounding disability selective abortion. This includes arguing that there is a more fundamental objection to disability selective abortion than the purely expressivist point that has prevailed in the discussion, instead framing it as a discrimination issue. This project also maintains a broadly pro-choice outlook.

**STUDENTS:** Yohan Ksor, Robert McKay and Juan Salas

**PROJECT MENTOR:** Dr. Nicole Tobias

### **Embedded Prototyping: SmartKoozie**

This is a demo of a class project for Embedded Systems Prototyping that is an electronic koozie that cools your drinks. Our project will allow for dynamic cooling for your drinks and will make your drinks cooler when it reads your drink falls above a certain temperature threshold that you will select. You can select the temperature threshold through an app so you can have your drink at your desired temperature.

**STUDENT:** Lilia Reihs

**PROJECT MENTOR:** Dr. Amanda Matousek

### **The Ghosts of The Spanish Civil War: Amplifying Unheard Voices from 1936 and Beyond**

We are creating a book of poems that encapsulate the experiences and beliefs of individuals during the Spanish Civil War. This book will uplift the voices of those who were impacted by the events of the Spanish Civil War. We will add images to the book to use mixed media and highlight a variety of experiences and impacts.

**STUDENTS:** Darien Pisacano, Bailey Herron and Kaylin Bell

**PROJECT MENTOR:** Dr. Amanda Matousek

### **La Mujer Embarazada y el Destino de sus Hijos Durante la Guerra Civil Española (“Pregnant women and the fate of their children during the Spanish Civil War”)**

This project aims to examine the treatment of pregnant incarcerated women during the Spanish Civil War, as well as the exportation and exploitation of their children. Additionally, this project will explore the abominable conditions within the women’s prisons and the mistreatment of women and their children.

**STUDENTS:** Sam Stuckey, Brian Lavelle, Niko Canoutas and Mal Ancrum

**PROJECT MENTOR:** Dr. Amanda Matousek

### **The Basque Country: A Fight for Sovereignty**

The Basque people live in Northern Spain, they speak a language (Euskara) that is not related to any other language in the world and they have their own culture and customs. They also have a strong sense on self-determination and have a strong history of resisting assimilation from Spain. They even have separatist groups to this day. The project will cover the history of Basque resistance from the Spanish Civil War until the end of the Franco regime in Spain, looking more specifically at key events, historical figures and the progression of Basque autonomy. We hope to give a better understanding of who the Basque people are, and their role during and post-Spanish Civil War.

**STUDENTS:** Jackson T. Forrest, Ethan Montes and Jose Ruiz Torres

**PROJECT MENTOR:** Dr. Amanda Matousek

### **Ay, Carolina: South Carolinian Volunteers in the Spanish Civil War**

A deep dive into the few South Carolinian men and women who served the Second Spanish Republic during the Spanish Civil War.

**STUDENTS:** Amelia McCurley, Katie Lammers and Camille Terracina

**PROJECT MENTOR:** Dr. Amanda Matousek

### **Influential Women of the Spanish Civil War**

This will spotlight influential women during the Spanish Civil War and highlight three women; for example, Isidora Dolores Ibárruri Gómez, a Spanish Republican politician during the Spanish Civil War and a communist. She is renowned for her slogan ¡No Pasarán!, which she issued during the Battle for Madrid in November 1936.

**STUDENT:** Kaitlyn (Katie) Miller

**PROJECT MENTOR:** Dr. Anne Rodrick

### **Building Critical Thinkers: Philosophy for Children in Developmentally Appropriate Practices**

This research looks at the current techniques and curriculum being taught to future educators. It looks specifically at the Philosophy for Children approach and how it is supporting the development of critical thinking skills in young children. It also evaluates the history of education and how developmentally appropriate practices have changed to see if Philosophy for Children is a useful technique to enhance critical thinking ability.

**STUDENT:** Tae'Von Gibbs

**PROJECT MENTOR:** Dr. Anne Rodrick

### **The History of Hip Hop: How Rap Music Has Been Used as a Tool for Liberation**

This is my senior humanities capstone that I have been working on over the course of the year. Along with detailing the history of hip hop culture and the most prominent genre of music to come from it, rap, I will include visual and audio elements that illustrate an argument for the importance of this art form. I will also be presenting my film and digital media and environmental studies capstones, which are also rap-music related (a music video and song, respectively).

**STUDENT:** Kleo Young

**PROJECT MENTOR:** Dr. Frank Leibfarth (University of North Carolina at Chapel Hill)

### **Fluoro-olefin and PEG-vinyl Ether Copolymerization for Polymer Blend Electrolytes**

In the summer of 2024, I worked at the University of North Carolina at Chapel Hill synthesizing polymers with enhanced electrolytic capabilities. Here I will present the efforts to synthesize the monomer needed for the copolymerization of hexafluoropropylene and polyethylene glycol and the characterization of the synthesized copolymer.

**STUDENT:** Blythe Edwards

**PROJECT MENTOR:** Dr. Anna Harkey

### **Women in Politics in South Carolina**

My research explores the experiences of women in politics in South Carolina. Through interviews with female legislators and lobbyists, this study investigates how gender stereotypes affect women's roles in the political field and examines differences in legislative priorities between men and women. Key findings highlight challenges such as fundraising difficulties, media bias and the need for women to adapt to male-dominated environments. This research aims to contribute to a deeper understanding of barriers to female representation in political offices and the implications for policymaking in South Carolina.

**STUDENT:** Kathryn Garner

**PROJECT MENTOR:** Dr. Jennifer Bradham

### **Large Mammal Herbivores as the Gardeners of Tropical Forests**

Large mammal herbivores play important ecological roles such as nutrient cycling and seed dispersal in ecosystems where they are present. However, much of our knowledge of large mammal impacts on an ecosystem comes from temperate forests or tropical savannas. Understanding these interactions and their effects on tropical forests are extremely important, as tropical forests play a large role in regulating the global climate. The goal of this project is to quantify the impacts of large mammal herbivores on tropical forest structure and nutrient cycling in intact tropical forests. Data collected from fenced and unfenced plot couplets (used to exclude mammals from certain parts of the landscape while allowing them full access to other parts) as well as images collected from camera traps (used to discern which large mammal species are visiting the area and how they are interacting with the forest) will be used to determine large mammal herbivore impacts on forest structure and nutrient cycling. Quantifying these interactions will allow us to better understand how these ecosystems function and change over time and inform and define conservation priorities.

**STUDENT:** Nathan Krueger

**PROJECT MENTOR:** Dr. Geoffrey Mitchell

### **Heat Evolution of the Bacterial Microbiome Found in Heat-Evolved Cladocopium Clacro**

Mass coral bleaching is endangering coral reefs, and research is being done to help prevent complete extinction. For my research, I explored the wild and experimentally evolved heat-tolerant symbionts Cladocopium Clacro. I isolated five bacterial genera from the wild-type and heat-resistant Cladocopium Clacro and subjected them to growth tests at low and high temperatures. Interestingly, not all SS8-derived bacteria grew better at higher temperatures.

Instead, nutrient exchange may be more crucial for their adaptation in the symbiont-associated microbiome.

**STUDENT:** Joseph Kimberling

**PROJECT MENTOR:** Dr. William DeMars

### **The Business of War: The Resurgence of Mercenaries and the Shaping of Modern African States**

This is a research paper for my African and African American studies capstone. The paper discusses the return of mercenary groups to Africa, focusing on their roles, impact and implications regarding state capacity.

**STUDENT:** Joseph Kimberling

**PROJECT MENTOR:** Dr. Rachel Vanderhill

### **To Coup or Not to Coup: West Africa**

This is a research paper for my international affairs capstone asking why military leaders in Niger, Burkina Faso and Mali have resorted to overthrowing the government and why these autocrats have to turn to outside actors, like mercenaries or contractors, to secure their regime.

**STUDENT:** Lundyn Ladner

**PROJECT MENTOR:** Dr. Rachel Vanderhill

### **Beyond Classical Deterrence: Rethinking Israel-Iran Relations Through Modern Deterrence Theories**

My research question is, given the logic of deterrence theory, why has Iran not developed a nuclear weapon and why has Israel's nuclear program remained secret? My research will refer to theoretical literature on deterrence theory, specifically looking at modern deterrence theories, the historical and ideological context of the countries' relationship, and the ongoing conflict, including Iran's progressing nuclear development, Iran's use of proxies and Israel's firm nuclear ambiguity despite threats and attacks.

**STUDENT:** Becca Hinds

**PROJECT MENTOR:** Dr. Trina Jones

### **Movement or Cult?: How Religious Movements Affect Identity and Well-Being**

While publicization of counter-cultural religious movements has become conflated with the term "cult," this presentation will eliminate the misconception that New Religious Movements can simply be defined as cults. However, while religious practices themselves do not propagate cult behavior, power structures created by authoritative religious practices can indoctrinate and potentially harm members — particularly children. This presentation will explore effects of religious indoctrination

in formative years of a child's life through the lens of Jill Duggar of TLC's "19 Kids and Counting." Through analysis of Jill Duggar's book "Counting the Cost", as well as research on the Duggar family and the Institute of Basic Life Principles, this presentation will seek to answer how religious indoctrination affects a child's sense of identity and how individuals can overcome religious trauma while maintaining fundamental religious beliefs.

**STUDENT:** Gabriella DiPrima

**PROJECT MENTOR:** Dr. Stephen Michelman

### **The Age of Adam: A Metaphysical Framework for Reconciling Biblical Literalism with Modern Climatology**

There are a concerning number of Christians in America today who refuse to interact honestly with climatology findings on the basis that climate scientists presume a 4.54-billion-year-old Earth, and many Protestant denominations insist upon a literal interpretation of the Hebrew Bible that excludes belief in an old Earth. This essay posits a metaphysical framework that can allow those who refuse to part with Biblical literalism to accept climate science by distinguishing between the "literal" age of the Earth and the "apparent" age of the Earth.

**STUDENTS:** Moses Briggs and Emilio Rochow

**PROJECT MENTOR:** Dr. Trina Jones

### **Embedded Prototyping: BeatTooth**

Do you find yourself incapable of clapping on beat? BeatTooth is the solution for you! This wearable device will play music, which you will clap on beat to. If you clap on beat, green lights will flash showing that you are on beat. If you get off beat, red lights will flash showing you are off beat. At the end of the song, a score will be reported to you.

**STUDENT:** Emily Schwendemann

**PROJECT MENTOR:** Dr. Mackay Salley

### **Spectral Line Classification**

Spectroscopy allows scientists to look deeper into the physical side of the universe, observing the chemical composition and velocity of celestial objects. These lines fall into three categories: continuous (all wavelengths present), emission (specific wavelengths emitted by glowing gas) and absorption (gaps where light is absorbed). A diffraction grating, the Star Analyzer with 100 lines/nm, was used to disperse light into its component wavelengths, enabling spectral data collection and analysis to better understand the physical properties of astronomical sources.

**STUDENTS:** Emily Schwendemann and Bryce Tomlins

**PROJECT MENTOR:** Dr. Mackay Salley

### **FlatSat**

The CricketSat is composed of a single wireless module and a receiving antenna. It consists of a subsystem that provides a modulated frequency proportional to the temperature. The system was launched using a small helium balloon and transmits a frequency signal of 433 MHz. An HDSDR radio scanning software is used to record specific frequencies relayed from the CricketSat back to the ground station.

**STUDENTS:** Cole Anderson and John Wetmore

**PROJECT MENTOR:** Dr. Nicole Tobias

### **Embedded Prototyping: Sharingan**

For our embedded systems class with Dr. Tobias, we are creating a device that uses a camera and computer vision software to control a servo motor that will continuously aim a screen toward a user to track them as they move through space. We will demonstrate this device in use at the Expo.

**STUDENT:** Anthony Tarulli

**PROJECT MENTOR:** Dr. Jennifer Bradham

### **Regional Analysis of Medical Apartheids in Spartanburg County**

Medical deserts, areas where populations have insufficient access to healthcare due to a lack of facility resources, are heavily prominent in the rural areas of the country. However, due to the intersections of institutionalized racism and medicine in the southeastern U.S., it is necessary to classify these as “medical apartheid regions”. This way, there can be the dual addressment of medical facility absence and the discriminatory foundations of medicine. The project aims to connect census-level data, canopy cover and ALICE (Asset Limited, Income Constrained, Employed) data to practitioner practice locations to assess medical apartheid regions.

**STUDENT:** Kai Beckett

**PROJECT MENTOR:** Dr. Dwain Pruitt

### **Debating the Dismantling of Diversity, Equity, and Inclusion Initiatives in Higher Education**

The project focuses on how political legislations and social climate have impacted DEI initiatives in higher education through oral interviews.

**STUDENT:** Millie Hatchette

**PROJECT MENTOR:** Dr. Lori Cruze

### **Seasonal Variation in Reproductive Output of Eastern Bluebirds**

Our research collected information on Eastern bluebird nesting activity to further understand their reproduction in terms of seasonal variation.

**STUDENTS:** Emily Schwendemann, Harper Morgan, Bryce Tomlins and John Henry Tennant

**PROJECT MENTOR:** Dr. Solmaz Bastani

### **Enhancing Quantum Dot Fluorescence in Lung Cancer Cells: The Role of DMSO**

Quantum dots (QDs) are semiconductor nanoparticles with fluorescent properties, making them useful for imaging applications. In this study, QDs were administered into human lung cancer cells to assess their uptake efficiency via spectroscopy. Various dimethyl sulfoxide concentrations were tested over different time points to optimize QD uptake.

**STUDENT:** Ramie Thompson

**PROJECT MENTORS:** Drs. Beau Christ and Jennifer Bradham

### **Tropical Cyclone Intensity and Frequency Since 1960 on a Global Scale: A Statistical Analysis of the NOAA IBTrACS Dataset**

This project is a part of my honors capstone in environmental science. It focuses on tropical cyclone (hurricane) data after the implementation of weather satellites. This narrowed time period is a restriction on the data analysis, but also a representation of the improvements of science over time specifically with data collection accuracy. Both global and regional scales are used to analyze the IBTrACS dataset and observe any present trends.

**STUDENT:** Tianna Kidd

**PROJECT MENTOR:** Dr. Alysa Handelsman

### **Beyond Aesthetics: Exploring Fashion as Identity**

Clothing is a powerful form of self-expression, as it typically offers a glimpse into both cultural norms and personal histories. Kidd’s research uses fashion as a lens to explore collective and individual identities in Cameroon and Morocco.

**STUDENT:** Alexandra Johnson

**PROJECT MENTOR:** Dr. Rachel Vanderhill

### **Germany and Poland: Diverging NATO Member States**

The difficulty some European NATO member states, specifically Germany, face in meeting the 2% defense spending benchmark as put into place at the 2014 Wales Summit is a complex issue that is shaped by historical, economic and political factors (NATO, 2024). When looking at the different approaches of Germany and Poland toward meeting NATO's 2% GDP defense spending goal, multiple sources highlight the deeper structural, political and historical factors that influence their military investments. Germany has been in a continuous struggle to meet the 2% GDP defense spending requirement laid out by NATO, and in doing so has led to extensive debates between policymakers and theorists. Poland, on the hand, has not only met but has far surpassed NATO's 2% GDP defense spending benchmark, put into place to ensure increased deterrence and military readiness among its member states (Fiott 190). Both countries are key member states of NATO, but present with very different strategies of going about achieving or falling short of the goal that has been set for them.

**STUDENT:** Joshua Todd

**PROJECT MENTOR:** Dr. Jennifer Bradham

### **Strategic Spartanburg Summer of Service**

I worked as a community data analyst focused on data visualization and accessibility for the county. I explored issues pertaining to economic welfare and food insecurity in the county. The information serves as a flashlight to indicate areas of need in the county and shed light into policy reforms that could counter pressing issues.

**STUDENT:** Kimber Keene

**PROJECT MENTOR:** Professor Jessica Scott-Felder

### **A Fed Gator is a Dead Gator**

I investigated the perception of alligators in my hometown of Daniel Island, South Carolina. Using this research, I created a body of art works on the understanding of these creatures and its effect on society.

**STUDENT:** Eric Harris

**PROJECT MENTOR:** Professor Jessica Scott-Felder

### **Blaq Belt Theory**

Restraint, power and understanding of oneself. Martial arts, along with the philosophies that accompany it, provide an intersection with the black experience,

revealing narratives of resilience and empowerment. "Blaq Belt Theory" seeks to explore connection through combat and strength through vulnerability.

**STUDENT:** Harlan Glenn

**PROJECT MENTOR:** Dr. Johnathan Davis

### **Effects of Urbanization on Abundance, Condition, and Habitat Preferences of Two Crayfishes**

Our research looks into how urbanization impacts two native crayfish species (*C. latimanus* and *C. howardi*) in the Spartanburg's Lawsons Fork Creek watershed. In the field, we documented crayfish populations, water quality variables and habitat conditions; specific habitat preferences were found for both species as well as their tolerance to urbanization. This study provides new insights into conserving a species key to maintaining ecosystem health and function.

**STUDENT:** MauriAnna Richardson

**PROJECT MENTOR:** Dr. Trina Jones

### **Rastafarian Women: Shadow or Sunlight**

"How to Say Babylon: A Memoir" tells how the author, Safiya Sinclair, eloquently recounts her upbringing with her Rastafarian parents — particularly her father — within the Rastafarian community. The author weaves a touching and compelling narrative that exhibits the meticulous interconnection between Rastafarian spiritual doctrines, cultural practices and, most importantly, gender dynamics. The complex intertwining of Rastafarianism and its grounded resistance to colonial oppression regarding spirituality, a cultural rebellion and particularly its emphasis on Black patriarchal structure has depicted and placed Rastafarian women as subordinate figures. This, unfortunately, restricts Rastafarian women, depicting them as the shadows of men, moving only if they did. This presentation explores how Rastafarian women navigate their gendered expectations compared to their male counterparts while also focusing on the effects of spirituality regarding both the personal struggles of Sinclair and the communal struggles illustrated by authors of other research.

**STUDENT:** Paulina Veremchuk

**PROJECT MENTOR:** Dr. Julie Sexeny

### **Why Malls Are Dying**

My humanities project involves research on shopping malls and their decline in America. I will be focusing on the local Westgate Mall that I have grown up next to my entire life. I am writing a research paper on the history of malls and how they shaped early consumerism in the United States, with a focus on memory studies. I will be questioning why shopping malls are decreasing in popularity in many areas and researching how they can

be utilized in more environmentally conscious ways and also benefit their respective communities. I will also be highlighting art and design, with research on how malls can benefit in the future and what the uniting features are in the architecture for the construction of the shopping mall. With many subjects such as English, history, art, urban design, gender studies and memory studies, I hope to encompass all my interests and the knowledge I have gathered from my time at Wofford to create a very interdisciplinary project. Along with my written portion, I will also be creating a photobook involving my film photography and older photographs of the Westgate Mall.

**STUDENT:** Jordyn Arionna Ford

**PROJECT MENTOR:** Dr. Dresden Lackey

### **PRIMETIME PREJUDICE: The Misrepresentation of Marginalized Communities in Law and Order: Special Victims Unit**

This is an analysis of the TV show "Law and Order: Special Victims Unit."

**STUDENT:** Enock Maganda

**PROJECT MENTOR:** Dr. Trina Jones

### **Civil Rights & Spirituality Through the Lens of Malcolm X**

"The Autobiography of Malcolm X," as told by Alex Haley, outlines the story of Malcolm X and the experiences that shaped him into the prominent figure that he has become. It tackles issues of civil rights and spirituality that have made an immense impact on our society today. I believe that there are differences in civil rights acts/terminology when looking at the historical context present in the 1960s compared to today's more contemporary civil rights terminology. Malcolm X's spiritual journey also serves as a blueprint for today's perception of what a spiritual conversion looks like due to social change and evolution. By bridging the gap between historical and modern perspectives, the autobiography remains a timeless lens through which readers can better understand the complexities of race, identity and resistance.

**STUDENT:** Zion Sampson

**PROJECT MENTOR:** Dr. Elizabeth W. Bradley (University of Minnesota)

### **Subsets of Myeloid Progenitors Limit Age-Associated Cortical Bone Loss**

This study investigates the role of myeloid progenitor-derived osteoclasts in limiting age-associated cortical bone loss. Using bone marrow chimeric mice, we analyzed how osteoclasts from different developmental origins influence bone remodeling. We then identified

specific myeloid subsets with increased anabolic factor expression, particularly in aged bone marrow recipients. These findings highlight CD74 as a potential target for therapies aimed at reducing age-associated bone loss.

**STUDENT:** Ellie Shealy

**PROJECT MENTOR:** Dr. Zachary Davis

### **Aroma Profile of Wine Throughout Fermentation**

In this project two grape juices and two yeast strains were chosen to determine how yeast strains affect the aroma profile of two red wines and the changes that occur throughout the fermentation process. The aroma compounds were analyzed using SPME coupled with GC-MS.

**STUDENT:** Joseph Navarro

**PROJECT MENTOR:** Dr. Dresden Lackey

### **The Impact of the Disaffiliation Within the United Methodist Church in North & South Carolina**

This research looks into the impact on a denominational level within North and South Carolina and also the impact of disaffiliations over LGBTQ+ inclusion on a local church level.

**STUDENT:** Quincy Hughes

**PROJECT MENTOR:** Dr. Anne Rodrick

### **Faith-Based Rehab in Prison**

This project is a search into how faith-based rehabilitation can be used as an alternative to secular rehabilitation in the prison system. Looking at both pros and cons of it, I plan to educate people a little into it, using both past and present examples.

**STUDENT:** Kayla Southwood

**PROJECT MENTOR:** Jorge Araneda Tapia (SIT study abroad program, Chile)

### **Voces de Liderazgo**

Because of the large Arab population in Chile, large Palestinian solidarity groups exist within Chile and especially Santiago. I studied the leadership styles of students within one Palestinian solidarity group in the University de Santiago de Chile. I examined their strategies, measured their successes and analyzed their strengths and weaknesses to show what student activist leaders can learn from them and where they could grow.

**STUDENT:** Christopher Gunsalus

**PROJECT MENTOR:** Dr. Anne Rodrick

### **Family Connection to the Underground Railroad**

My capstone analyzes the Underground Railroad, focusing on routes and methods of emancipation. It also examines my family's connection as abolitionists in upstate New York and the risks they took as a stop on the Underground Railroad.

**STUDENT:** Campbell Cawthon

**PROJECT MENTOR:** Dr. Grace Schwartz

### **Water Quality in Spartanburg Creeks**

Over the past few months, we have been monitoring multiple creeks and how runoff affects water quality and bacteria levels.

**STUDENT:** Chandler Doody

**PROJECT MENTOR:** Dr. Trina Jones

### **Bridging the Gap Between Religion and Atheism**

The aim of this presentation is to illustrate how adopting a humanist perspective can aid in bridging the division created by a wide range of discrepancies in the field of religion. Chris Stedman's memoir, "Faitheist: How an Atheist Found Common Ground with the Religious," examines the idea of fostering human connection despite fundamental differences in beliefs. Stedman emphasizes the notion that looking past external labels and categorizations allows us to actually see each other for who we are. Stedman's life demonstrates that these categories can morph and change over time, but the desire for meaningful relationships grounded on humanism never goes away. If individuals can look past what they think are barriers and embrace humankind, then there is an endless world of possibility.

## **INTERESTED IN LEARNING MORE ABOUT TERRIER EXPO AT WOFFORD COLLEGE?**

Please contact Dr. Ramón Galiñanes Jr., director of undergraduate research and post-graduate fellowships, at [galinanesr@wofford.edu](mailto:galinanesr@wofford.edu) or scan the QR code.



**SPECIAL THANKS TO:**

Presenters and mentors

The Division of Campus Life and Student Development

The Office for Civil Rights, Compliance and Community Initiatives

The Office of Campus Events

The Office of Marketing and Communications

The Office of the President

The Office of the Provost

The Office of Student Success



**WOFFORD.EDU**